

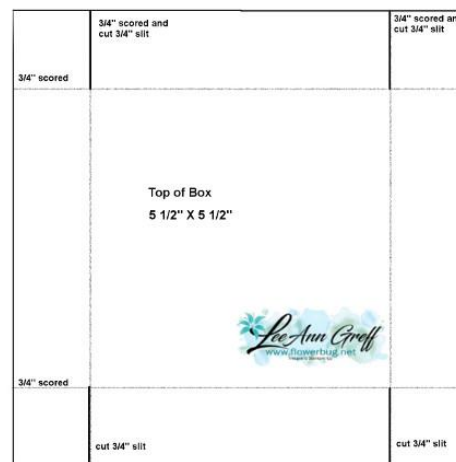
Sprig Punch Box

LeeAnn Greff

701-720-4607

lagreff@gmail.com

www.flowerbug.typepad.com



Measurements:

- Top of box is 5 1/2" square scored at 3/4" on all edges; bottom is 5 7/8" square and scored at 1" from all edges.
- top layer is 3 1/2" square; next layer is 3 5/8" square
- Punch 40 sprig punches to form a wreath

Directions:

1. Cut two pieces; one for the top and one for the bottom of the box using the measurements in the templates above.
2. Score as shown. Cut two slits up to the scored line on each side. Assemble box so tabs are inside the box.
3. Cut two pieces for the top. Punch 40 sprigs using the Sprig Punch. Adhere the sprigs to the top card stock layer in a circle adhering just the very end of each punched piece.
4. Decorate with a tag or greeting banner.